



Lodge





Lodge

Imagine a bouclé fabric so robust, gorgeous and right on trend, you just instantly know it is the one. It is an upholstery fabric, named Lodge and part of the Textafoam Comfort collection. A collection that consists only of soft, voluminous and elegant fabrics.

Lodge is woven on a dobby loom and consists out of 100% virgin polyester. It has an irregular bouclé and flat yarn, which gives extra depth and liveliness to this nice and luxurious textile.

Yarn dyed, which creates a contrasting and ultimately rich appearance. The backside has been provided with a needle punch coating to reinforce the strength and stability of the fabric. Machine-washable at 30 degrees Celsius*, which makes it easy-to-clean and maintain.

Please note that during usage the surface will be a bit more roughened and a light wooly/ hairy look can appear, this has no further influence on the durability of this textile and can be taken away with a pilling machine.

Please also be aware that the fabric is sensitive for sharp tools, belts, jewelry and pets. Loops or loose threads can appear and can be pushed back in the fabric with a blunt object. Make sure never to pull or cut the thread.

We present a full palette, to make sure every commercial colour is available for you.

Lodge is the powerful item you just need to have in your collection.

- Always be careful with sharp or rough objects such as watches, buckles or Velcro, as they may damage the fabric.
- When a loop does occur, it can be easily pushed back into the fabric with a blunt object.
- Please note that through daily use a certain hairiness may occur, this can easily be taken away with a pilling machine and has no further influence on the durability of this textile.
- We recommend to wash the cover inside out and immediately place the cover back to the piece of furniture, slightly damp, after washing.

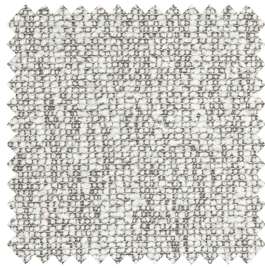
***Textafoam originals** Established in 1970, this Dutch family business brings together craftsmen in textiles and furniture design to build an unrivalled portfolio in upholstery fabrics that meets buyer's needs every time. Featuring a wide colour range, ultimate value for money and excellent reliability in the supply chain.*

Composition

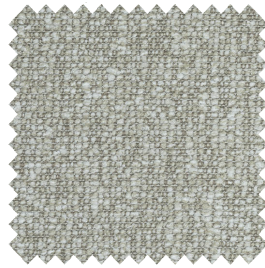
/ faceside 100%PES
/ backside n/a
/ jacquard

Suitable for

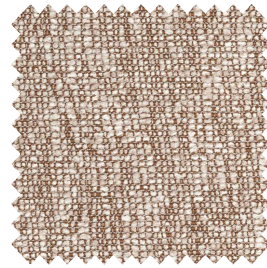
sofa's, beds, chairs with fitted and loose fitting upholstery



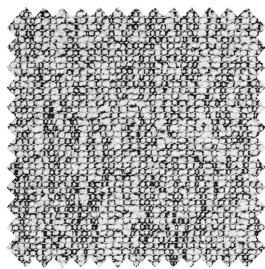
ashgrey 40



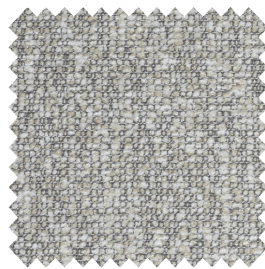
beige 05



blossom 166



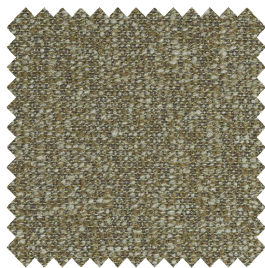
blackwhite 61104 (new colour)



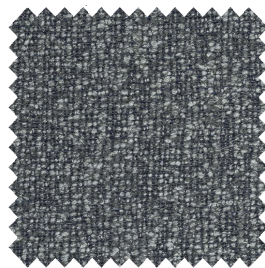
clay 84



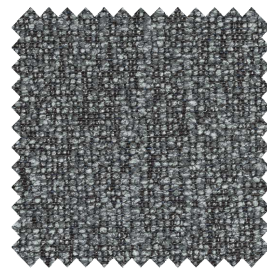
cognac 28



curry 216



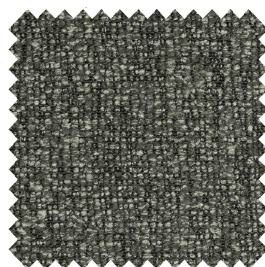
darkblue 48



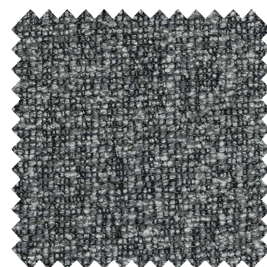
darkgrey 68



hazel 96

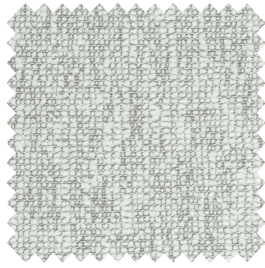


hunter 156

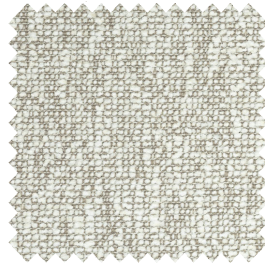


lava 165

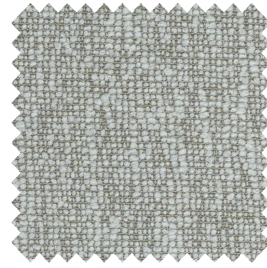
Please note: colours may vary according to your screen settings.



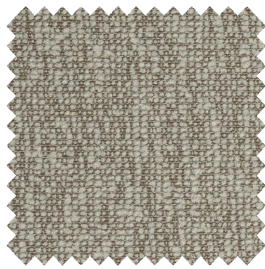
lightgrey 60



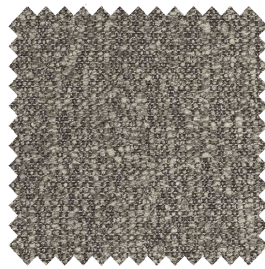
linen 110



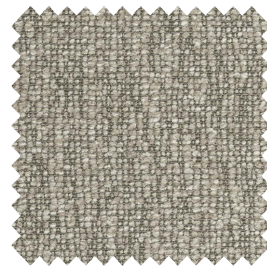
natural 01



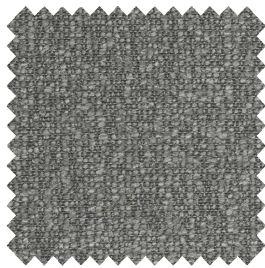
sand 03



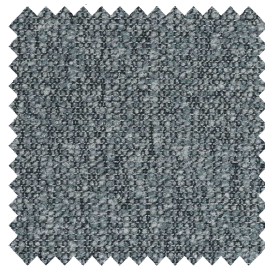
sepia 176



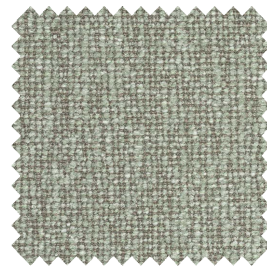
shitake 124



steel 149



teal 198



thyme 206

Please note: colours may vary according to your screen settings.

Lodge - Article passport


A soft and strong multitone bouclé fabric.

Available from stock in a wide range of contemporary and commercial colours.

Product characteristics

Productgroup	jacquard	
Applications	sofa's, beds, chairs with fitted and loose fitting upholstery	
Composition faceside	100%PES	
Composition backside	n/a	
Coating	needle punch	
Statistic code	54075300	
Dyeing method	yarn dyed	
Available colours	21	
Packaging	transparent plastic	






Durability specifications

Test	Test specification	Executed by laboratory:	Unit	Testresult		Norm RAL GZ 430/4:2019-01		Norm DIN EN 14 465:2006-09
				Dry	Wet	DGM	DGM+	
Abrasion resistance - yarn breakage	DIN EN ISO 12947-1:2007-04, DIN EN ISO 12947-2:2017-03	CTL	cycles	>100.000		min. 12.000	min. 16.000	A
Pilling	DIN EN ISO 12945-2:2000-11. 2000 cycles	CTL	grade	4		min. 3-4	min. 4	B
Colour fastness to light	DIN EN ISO 105-BO2:2014-11. Process 3, exposure level 5							
	light colours	CTL	grade	5		min. 4	min.5	B
	middle colours	CTL	grade	5		min. 4	min.5	B
	dark colours	CTL	grade	5		min. 4	min.5	B
Colour fastness to rubbing	DIN EN ISO 105-X12:2016-11							
	light colours	CTL	grade	5	5	dry: 4, wet: 3	dry: > 4, wet: 3-4	A/A
	middle colours	CTL	grade	4-5	5	dry: 4, wet: 3	dry: > 4, wet: 3-4	A/A
	dark colours	CTL	grade	4-5	5	dry: 4, wet: 3	dry: > 4, wet: 3-4	A/A
Ignitability (cigarette test)	 BS 5852 part 1 (1979) from The Furniture and Furnishing (Fire) (Safety) regulations: 1988 No. 1324. Schedule 4 part 1 Ignition source 0: cigarette	CTL		passed				

Processing specifications

Minimum workable width in centimeters	± 138							
Roll length in meters	± 40							
Material weight in grams per linear meter	± 550							
Test	Test specification	Executed by laboratory:	Unit	Testresult		Norm RAL GZ 430/4:2019-01		Norm DIN EN 14 465:2006-09
				Warp	Weft	DGM	DGM+	
Tensile strength	DIN EN ISO 13934-1:2013-08	CTL	Newton	1.320	751	min. 350	min. 400	A/A
Tear growth resistance	DIN EN ISO 13937-3:2000-06	CTL	Newton	116,5	153,9	min. 25	min. 30	A/A
Resistance to seam slippage	DIN EN ISO 13936-2:2004-07. Load 180 N	CTL	mm	3,3	2,9	max. 5	max. 4	A/A
Delamination	DIN 53530:1981-02	CTL	Newton	n/a	n/a	n/a	n/a	n/a
Chemical substances	REACH	Centexbel		passed				
	Oeko-Tex, product class II	Centexbel		certified				

Cleaning specifications

Test	Test specification	Executed by laboratory:	Unit	Testresult		Norm RAL GZ 430/4:2019-01		Norm DIN EN 14 465:2006-09
				Warp	Weft	DGM	DGM+	
Dimensional change for washing 30 degrees celcius / air drying	DIN EN ISO 5077:2008-04, DIN EN ISO 6330:2013-02, DIN EN ISO 3759:2011-08	CTL	%	-0,6	-1,2	n/a	n/a	A/A
<div></div> <p>- We recommend to wash the cover inside out and immediately place the cover back to the piece of furniture, slightly damp, after washing.</p>								



Textaafoam
creativity in fabrics

Textaafoam b.v.
La Défense 11 | 5026 SC Tilburg
P.O. Box 12 | 5050 AA Goirle
The Netherlands

T +31(0)13 534 5934
F +31(0)13 534 7586
E info@textaafoam.nl
www.textaafoam.nl